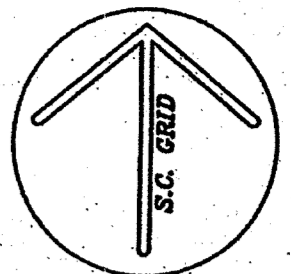


VICINITY MAP NOT TO SCALE

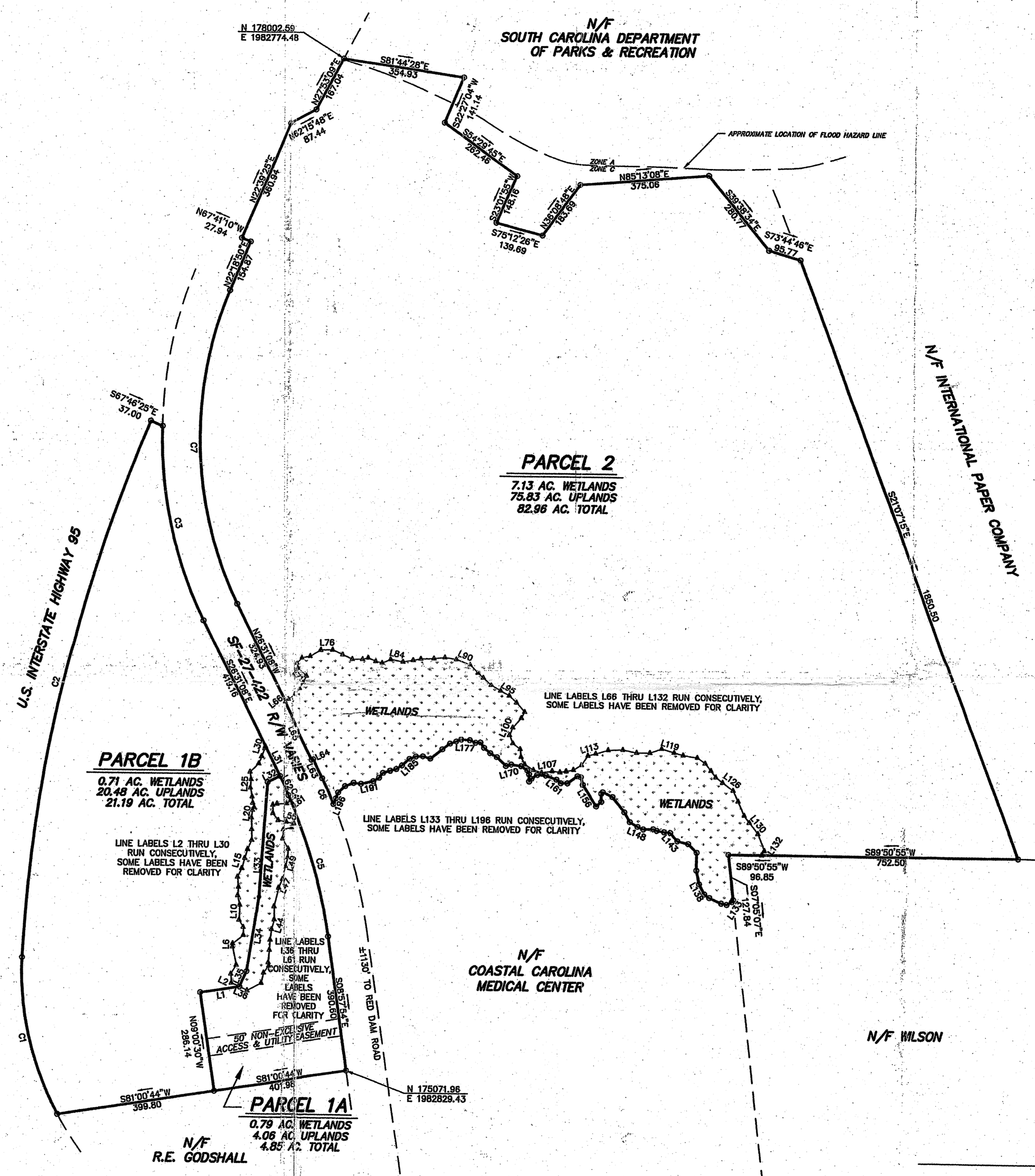


CURVE	RADIUS	LENGTH	TANGENT	CHORD	CHORD BEARING	DELTA
C1	570.85	468.81	240.24	463.17	S13°37'18"E	30°50'41"
C2	4600.00	1610.53	613.59	1602.31	S12°27'12"W	20°03'38"
C3	1200.92	578.28	284.86	572.71	S12°44'29"E	27°35'23"
C4	1382.47	16.81	8.41	16.81	N28°06'33"W	0°41'48"
C5	1382.47	405.26	204.09	403.81	N17°14'48"W	16°47'45"
C6	1482.39	82.26	41.14	82.25	N24°58'22"W	3°02'28"
C7	1090.92	929.79	485.25	901.90	S02°08'10"E	48°50'00"
C8	1382.38	470.00	237.29	467.74	S88°43'13"W	19°28'48"
C9	2416.83	133.02	66.51	133.00	N85°44'56"W	3°08'12"

LINE	BEARING	LENGTH
L1	N80°59'30"E	115.64
L2	S85°32'52"E	25.26
L3	S04°45'45"E	26.15
L4	S30°09'13"W	30.04
L5	S114°34'48"E	54.83
L6	S01°08'08"W	9.31
L7	S51°54'33"W	39.61
L8	S01°47'25"E	22.60
L9	S31°28'57"E	23.99
L10	S01°25'03"W	41.84
L11	S12°31'19"E	27.71
L12	S05°30'43"W	23.40
L13	S07°04'40"E	29.22
L14	S27°01'20"W	28.14
L15	S15°23'51"W	29.52
L16	S171°51'51"W	26.41
L17	S24°18'26"W	28.07
L18	S00°41'44"E	30.57
L19	S02°05'11"E	33.98
L20	S08°08'53"W	21.83
L21	S34°43'53"W	9.45
L22	S18°15'40"E	13.58
L23	S07°10'25"E	17.86
L24	S12°21'30"E	26.99
L25	S04°24'12"W	24.42
L26	S07°59'10"E	22.15
L27	S45°37'18"W	35.38
L28	S20°48'12"W	25.16
L29	S18°29'12"E	26.39
L30	S18°23'51"W	6.50
L31	N26°31'08"W	97.85
L32	S83°28'52"W	40.26
L33	S03°36'22"W	329.54
L34	S09°03'48"W	216.09
L35	S24°27'08"E	48.69
L36	S85°32'52"E	25.26
L37	N82°14'01"E	46.41
L38	N12°43'11"E	30.66
L39	N35°41'24"E	25.12
L40	N10°00'10"W	9.86
L41	N04°38'18"E	35.67
L42	N03°08'27"E	29.10
L43	N05°37'40"E	30.28
L44	N18°45'10"E	28.44
L45	N01°56'40"W	36.61
L46	N14°08'09"E	54.10
L47	N23°32'06"E	27.73
L48	N15°21'10"E	37.79
L49	N14°35'59"E	25.60
L50	N00°20'18"W	24.31
L51	N32°54'02"E	34.34
L52	N04°33'00"E	25.94
L53	N77°53'55"E	28.05
L54	N33°00'31"E	13.36
L55	N77°48'14"W	24.70
L56	N79°50'00"W	27.04
L57	N57°57'28"W	25.64
L58	N00°07'18"W	24.04
L59	N76°06'47"E	12.10
L60	N87°27'28"E	30.77
L61	N54°19'52"E	14.85
L62	N26°31'08"W	62.74
L63	N26°31'08"W	61.28
L64	S83°28'52"W	5.00
L65	N26°31'08"W	193.54
L66	N51°38'23"E	12.05
L67	N57°27'39"E	26.22

LINE	BEARING	LENGTH
L68	N42°09'50"E	25.60
L69	N28°28'55"E	21.30
L70	N22°36'12"E	24.28
L71	N49°01'51"W	36.60
L72	N11°40'52"W	15.35
L73	N43°58'43"E	23.12
L74	N70°09'10"E	25.47
L75	N58°04'42"E	35.65
L76	N89°11'51"E	34.69
L77	S86°20'43"E	32.78
L78	S85°26'48"E	31.41
L79	N89°59'49"E	29.71
L80	N75°02'29"E	17.12
L81	S94°30'30"E	24.53
L82	N30°18'12"E	18.91
L83	N85°27'58"E	27.85
L84	S78°41'48"E	36.92
L85	N79°14'39"E	30.00
L86	N78°40'18"E	22.61
L87	N87°44'35"E	38.19
L88	N83°59'12"E	32.24
L89	S80°59'11"E	33.84
L90	S87°38'33"E	43.15
L91	S42°38'21"E	34.81
L92	S48°09'59"E	21.54
L93	S44°37'29"E	33.47
L94	S57°15'48"E	32.94
L95	S88°21'22"E	30.05
L96	S48°16'27"E	29.64
L97	S41°14'29"E	37.82
L98	S27°49'10"W	20.45
L99	S41°49'40"W	36.95
L100	S22°43'08"W	23.95
L101	S22°52'37"E	28.03
L102	S81°14'48"E	27.73
L103	S08°31'16"E	25.40
L104	S27°00'30"E	24.76
L105	S88°12'18"E	30.44
L106	S73°10'20"E	24.83
L107	N80°54'40"E	31.23
L108	S82°01'48"E	23.04
L109	N78°27'08"E	18.33
L110	N73°47'45"E	21.50
L111	N58°48'58"E	27.18
L112	N33°09'38"E	33.79
L113	N74°42'45"E	23.22
L114	N72°30'01"E	38.38
L115	N88°07'00"E	42.72
L116	S78°07'14"E	41.06
L117	N00°20'18"W	24.31
L118	N89°24'18"E	36.66
L119	N83°00'45"E	37.94
L120	S74°01'16"E	27.34
L121	S80°33'44"E	41.77
L122	S54°41'05"E	28.25
L123	S39°51'40"E	27.31
L124	S37°27'13"E	23.17
L125	S82°13'57"E	28.95
L126	S83°00'03"E	38.00
L127	S28°21'58"E	34.77
L128	S24°10'29"E	44.65
L129	S36°53'49"E	24.88
L130	S39°10'56"E	41.14
L131	S22°10'11"E	52.02
L132	S32°31'58"W	14.84
L133	S36°31'58"W	6.63
L134	S82°37'36"W	17.76

LINE	BEARING	LENGTH
L135	N77°50'45"W	16.25
L136	N66°37'37"W	37.87
L137	N56°31'06"W	17.38
L138	N29°28'13"W	32.02
L139	N12°18'18"W	39.27
L140	N00°21'30"W	50.61
L141	N48°54'10"W	35.48
L142	N70°44'31"W	32.21
L143	N42°12'41"W	31.44
L144	N83°19'31"W	18.08
L145	N79°57'00"W	21.86
L146	N87°08'40"W	10.77
L147	S88°59'31"W	29.27
L148	N66°59'32"W	17.91
L149	N69°32'11"W	26.53
L150	N30°18'12"E	18.91
L151	N38°39'54"W	56.30
L152	N84°35'13"W	31.68
L153	S42°53'58"W	6.31
L154	S01°22'53"E	23.84
L155	S48°20'23"W	20.37
L156	N32°08'18"W	73.72
L157	N15°11'35"W	23.07
L158	N74°20'35"W	10.15
L159	S84°09'31"W	35.98
L160	S89°41'58"W	19.63
L161	N81°17'40"W	16.26
L162	N89°35'46"W	33.33
L163	N88°48'11"W	25.30
L164	S83°07'50"W	18.89
L165	S40°50'59"W	10.41
L166	N01°10'37"W	22.94
L167	N24°03'38"W	12.47
L168	N57°10'10"W	21.80
L169	N81°19'14"W	29.61
L170	S74°19'59"W	15.79
L171	N48°41'46"W	37.46
L172	N58°48'30"W	22.60
L173	N48°37'34"W	23.77
L174	N35°18'08"W	19.23
L175	S88°21'50"W	13.83
L176	N88°27'03"W	16.60
L177	N82°28'06"W	25.23
L178	S84°05'01"W	16.82
L179	S70°11'49"W	18.87
L180	S51°51'31"W	27.82
L181	S51°08'01"W	46.04
L182	N72°59'35"W	22.66
L183	S87°41'22"W	20.36
L184	S88°25'04"W	19.89
L185	S48°03'15"W	29.00
L186	S83°00'45"E	18.99
L187	S73°59'06"W	19.01
L188	S71°56'16"W	22.08
L189	S39°38'56"W	18.00
L190	S88°46'22"W	19.55
L191	S77°14'51"W	36.52
L192	N83°38'31"W	22.10
L193	S88°30'59"W	26.84
L194	S40°23'03"W	27.66
L195	S19°58'02"W	18.86
L196	S22°11'35"W	17.21
L197	N53°57'54"W	56.57
L198	N36°02'08"E	56.57
L199	N81°02'08"E	8.00
L200	S08°57'54"E	50.00
L201	N81°02'08"E	55.00
L202	N08°57'54"W	50.55
L203	S74°05'05"W	400.00

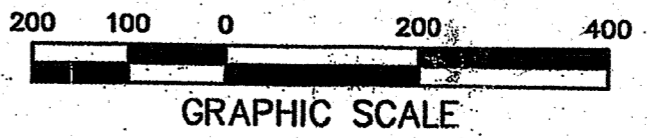


- NOTES:
- PREPARED FOR COASTAL LAND DEVELOPMENT COMPANY
 - A PORTION OF THIS PROPERTY LIES WITHIN ZONE A, PER REFERENCE PLAT, PANEL No. 176-B, COMMUNITY No. 450112, DATED 9/29/86.
 - ALL COORDINATES BASED ON SOUTH CAROLINA STATE PLANE COORDINATE SYSTEM, NAD 83.
 - THIS MAP IS A GENERAL REPRESENTATION OF THE LOCATIONS OF 404 WETLANDS (FRESH WATER WETLANDS) LOCATED WITHIN THE PROPERTY AS SHOWN. THESE WETLANDS HAVE BEEN LOCATED BY CONNOR & ASSOCIATES, INC. PERSONNEL. THE WETLAND BOUNDARIES WERE REVIEWED AND VERIFIED BY THE U.S. ARMY CORPS OF ENGINEERS, CHARLESTON DISTRICT ON MAY 27, 2000 (USACE REF. SAC-81-2000-0744(O)).
 - THIS PLAT DOES NOT REPRESENT A BOUNDARY SURVEY OF THE PROPERTY SHOWN. IT IS FOR WETLAND DELINEATION PURPOSES ONLY.

- REFERENCES:
- "A BOUNDARY & WETLAND PLAT OF A 135,582 ACRE TRACT AT NORTHEAST QUADRANT OF I-95 & U.S. HWY 278" DATE: 5/17/86 BY: WILLIAM J. WHITE, S.C.R.L.S. No. 4676
 - "A BOUNDARY SURVEY OF 26.04 ACRES, SF 27-422, PARCELS 1A & 1B" DATE: 01/13/04; LAST REVISED: 03/17/05 BY: DONALD R. COOK, JR., S.C.R.L.S. No. 19010
- LEGEND:
- WETLAND FLAG

ACREAGE TABLE:

PARCEL	WETLANDS	UPLANDS	TOTAL
PARCEL 1A	0.79 ACRES	4.06 ACRES	4.85 ACRES
PARCEL 1B	0.71 ACRES	20.48 ACRES	21.19 ACRES
PARCEL 2	7.13 ACRES	75.83 ACRES	82.96 ACRES
PARCEL 3	0.00 ACRES	0.77 ACRES	0.77 ACRES
TOTAL	8.63 ACRES	101.14 ACRES	109.77 ACRES



REVISIONS:
1. 04/27/05 REVISED PARCELS

FIELD CHECK: RWT
OFFICE CHECK: LAM
DRAWN BY: JRD
DATE: 04/28/00
SCALE: 1"=200'
PROJECT No.: SDC006A
PROJECT NAME: SDC006A1.dwg
FILE: SDC006A1.dwg

SHEET 1 OF 1

DONALD R. COOK, JR.
S.C.P.L.S. No. 19010
NOT VALID UNLESS CRIMPED WITH SEAL

WARD EDWARDS, INC.
Engineering - Planning - Science - Surveying
155 CALHOUN BLVD. SUITE 200
FLORENCE, SC 29506
P. 803.667.6666
F. 803.667.6666
http://www.ward-edwards.com

CONNOR & ASSOCIATES INC.
1000 W. 10TH ST. SUITE 100
CHARLESTON, SC 29405
P. 803.799.1111
F. 803.799.1111
http://www.connor-engineers.com

SOUTH CAROLINA SURVEYORS ASSOCIATION
No. C00152

REVISIONS:
1. 04/27/05 REVISED PARCELS

FIELD CHECK: RWT
OFFICE CHECK: LAM
DRAWN BY: JRD
DATE: 04/28/00
SCALE: 1"=200'
PROJECT No.: SDC006A
PROJECT NAME: SDC006A1.dwg
FILE: SDC006A1.dwg

SHEET 1 OF 1

**109.77 ACRE TRACT, SF 27-422
A.K.A. COASTAL LAND TRACT**

A WETLAND MAP OF
TMS 42-00-05-024
JASPER COUNTY, SOUTH CAROLINA