

CONCEPT PLAN

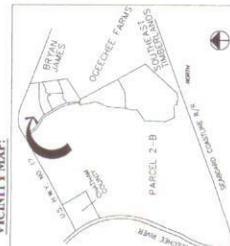
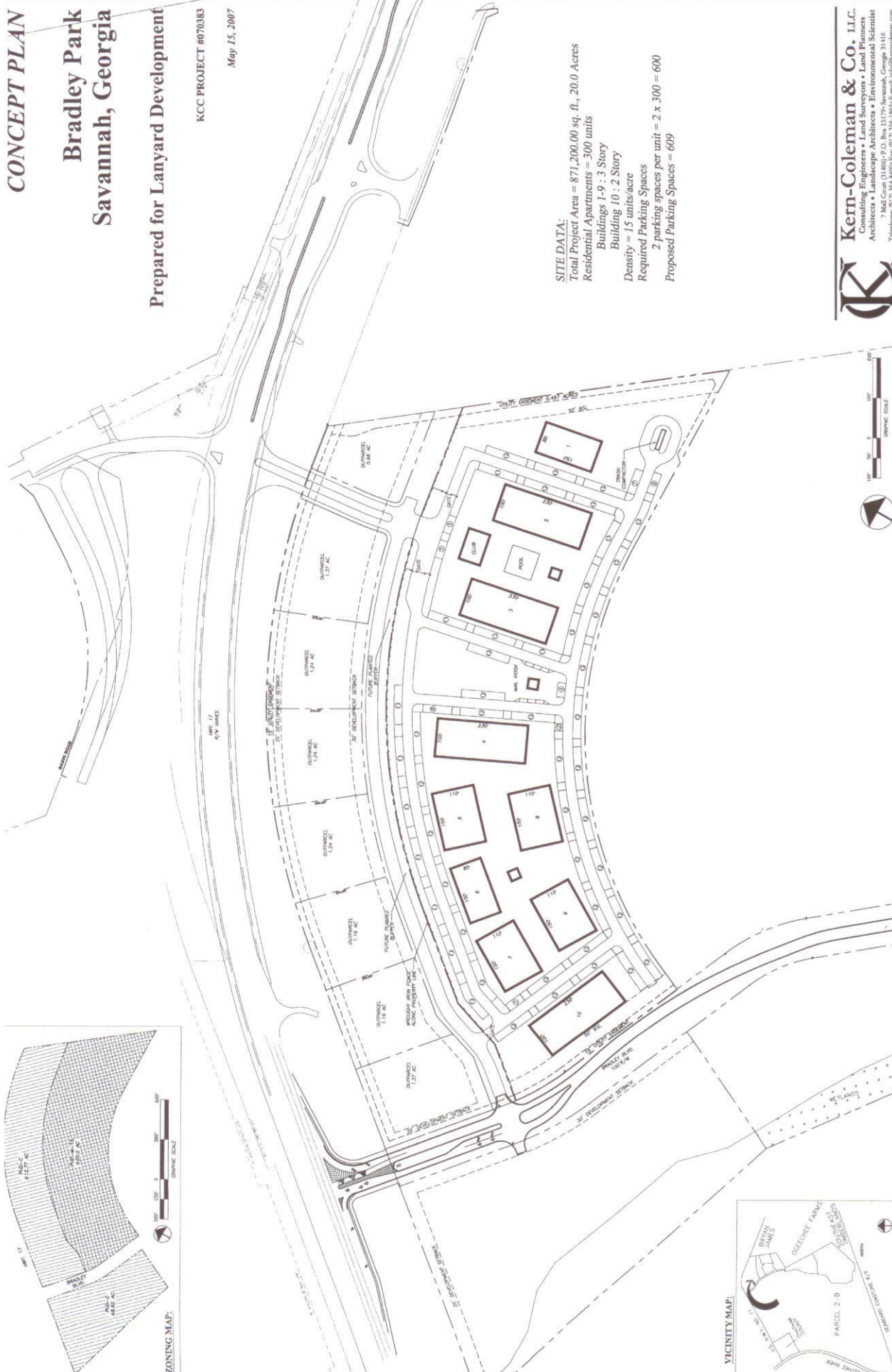
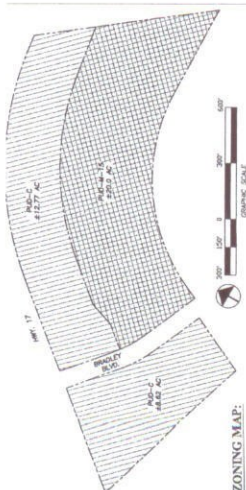
Bradley Park Savannah, Georgia

Prepared for Lanyard Development

KCC PROJECT #070383

May 15, 2007

SITE DATA:
 Total Project Area = 871,200.00 sq. ft., 20.0 Acres
 Residential Apartments = 300 units
 Buildings 1-9 : 3 Story
 Building 10 : 2 Story
 Density = 15 units/acre
 Required Parking Spaces
 2 parking spaces per unit = 2 x 300 = 600
 Proposed Parking Spaces = 609



Kern-Coleman & Co. I.L.C.
 Consulting Engineers & Land Surveyors • Land Planners
 Architects • Landscape Architects • Environmental Scientists
 7 Mall Court (31-860) • P.O. Box 15179 • Savannah, Georgia 31416
 Tel: (912) 354-8400 • Fax: (912) 354-1851 • E-mail: info@kerncoleman.com

