

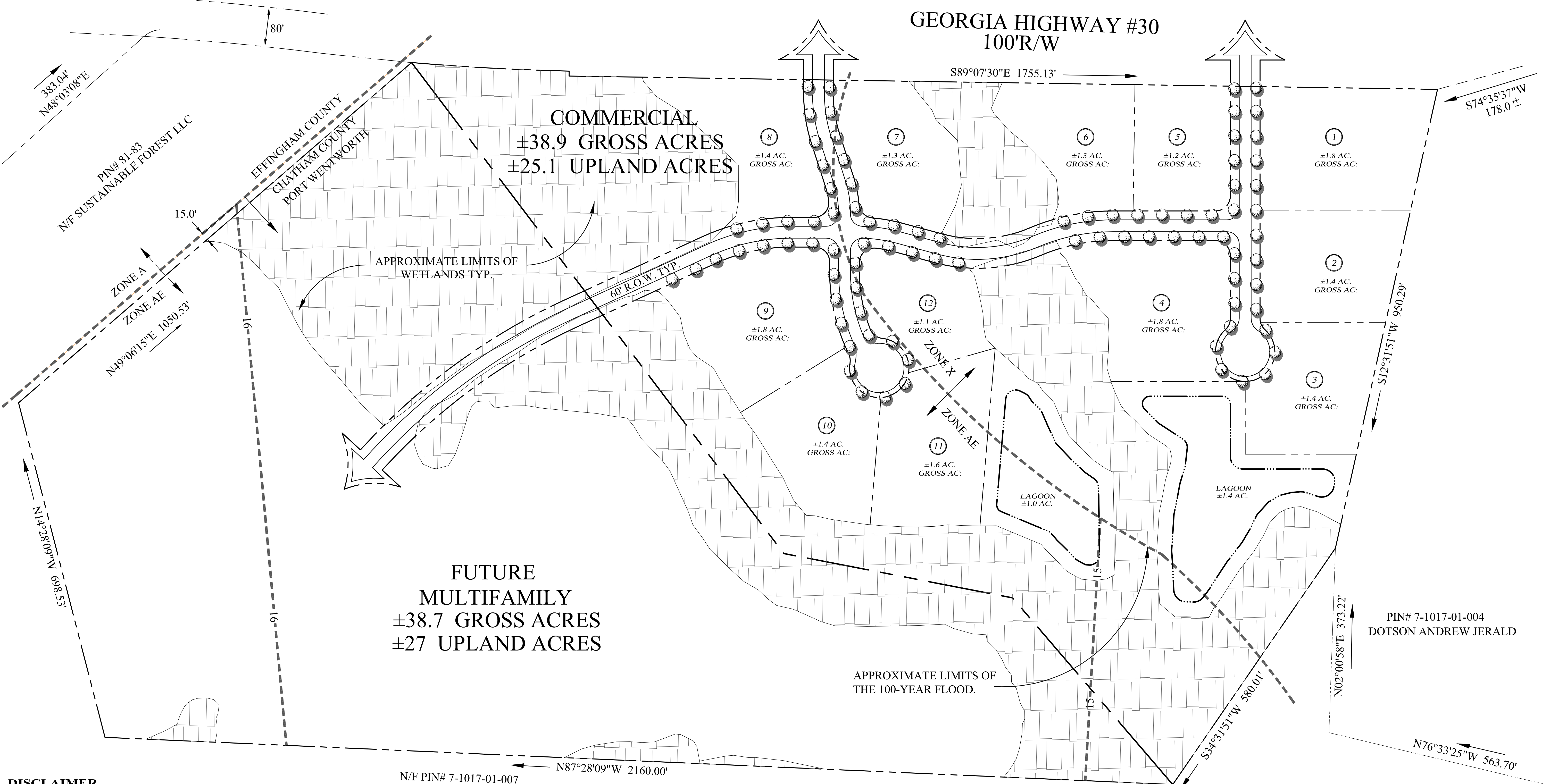
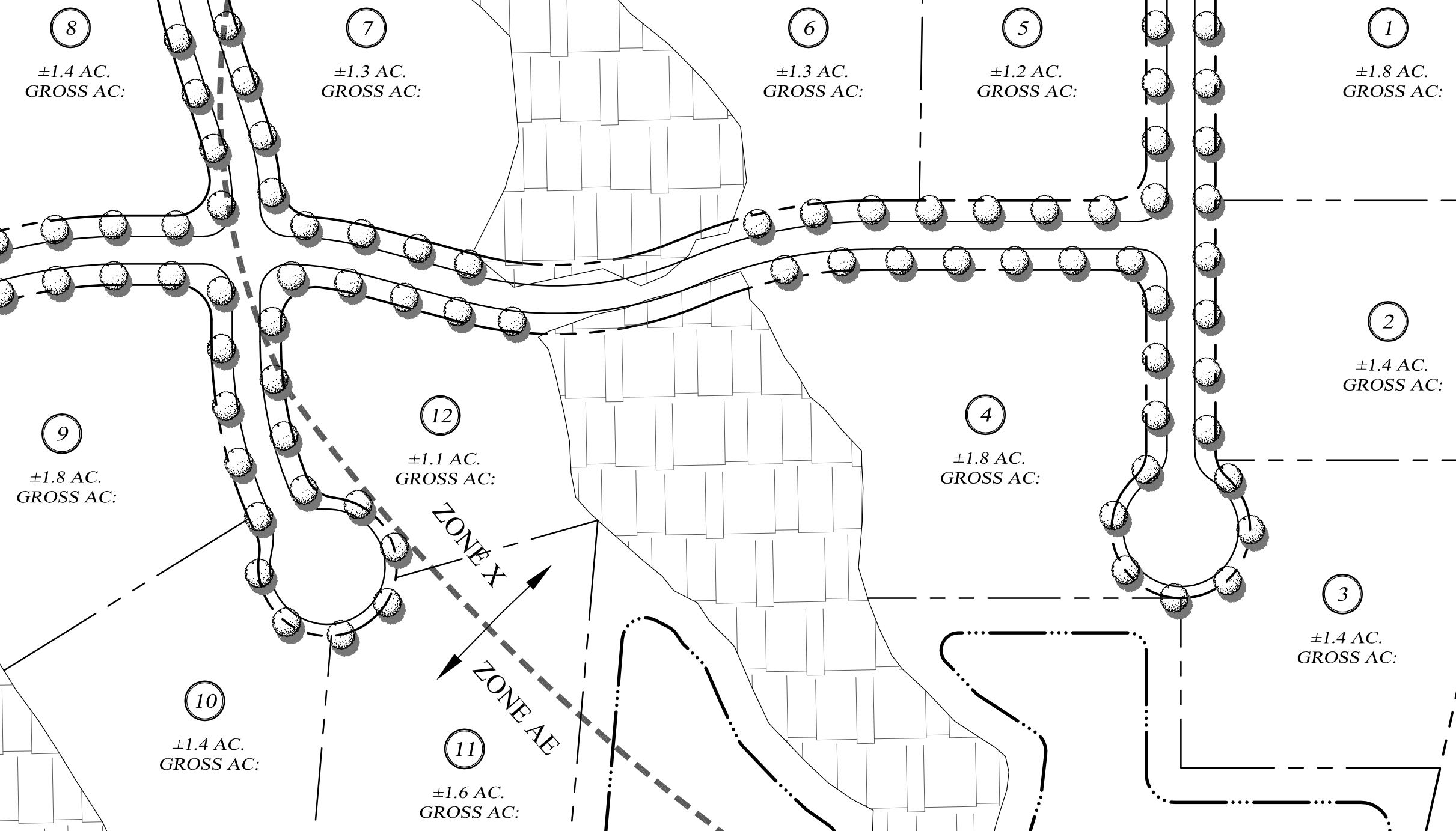
GEORGIA HIGHWAY #30  
100'R/W

COMMERCIAL  
±38.9 GROSS ACRES  
±25.1 UPLAND ACRES

FUTURE  
MULTIFAMILY  
±38.7 GROSS ACRES  
±27 UPLAND ACRES

APPROXIMATE LIMITS OF  
WETLANDS TYP.

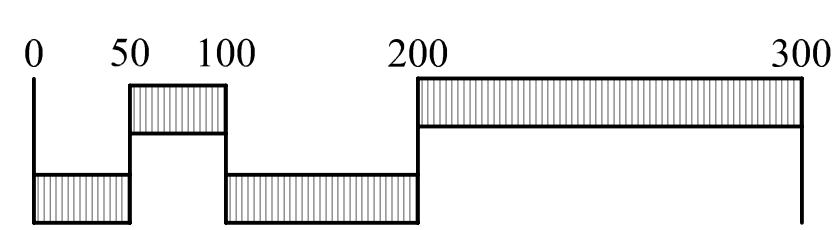
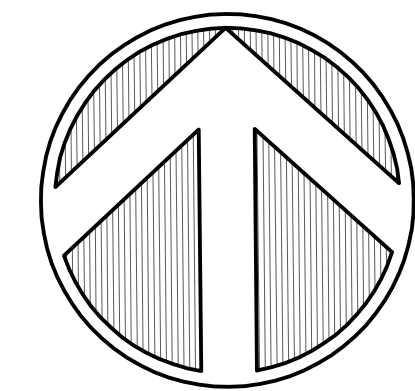
APPROXIMATE LIMITS OF  
THE 100-YEAR FLOOD.



**DISCLAIMER**

THIS MAP ILLUSTRATES A GENERAL PLAN OF THE DEVELOPMENT WHICH IS FOR DISCUSSION PURPOSES ONLY, DOES NOT LIMIT OR BIND THE OWNER, AND IS SUBJECT TO CHANGE AND REVISION WITHOUT PRIOR WRITTEN NOTICE TO THE HOLDER. DIMENSIONS, BOUNDARIES AND POSITION LOCATIONS ARE FOR ILLUSTRATIVE PURPOSES ONLY AND ARE SUBJECT TO AN ACCURATE SURVEY AND PROPERTY DESCRIPTION.

DATE: FEBRUARY 15, 2008  
REVISED: FEBRUARY 21, 2008

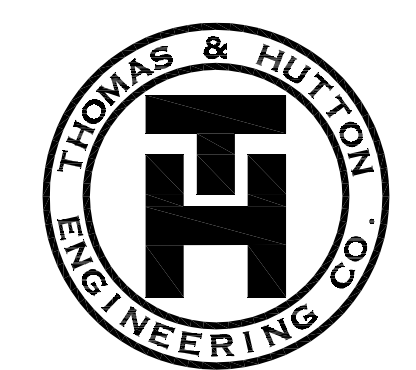


SCALE: 1" = 100'

**PATEL TRACT GA HWY #30  
CONCEPT #1**

PORT WENTWORTH, GEORGIA

ROY PATEL



**THOMAS & HUTTON ENGINEERING CO.**

GEORGIA - SAVANNAH, BRUNSWICK  
SOUTH CAROLINA - CHARLESTON, MYRTLE BEACH  
NORTH CAROLINA - WILMINGTON

0:\Patel Hwy 30\ENR\14581-1-02.dwg Feb 21, 2008 - 8:43:34