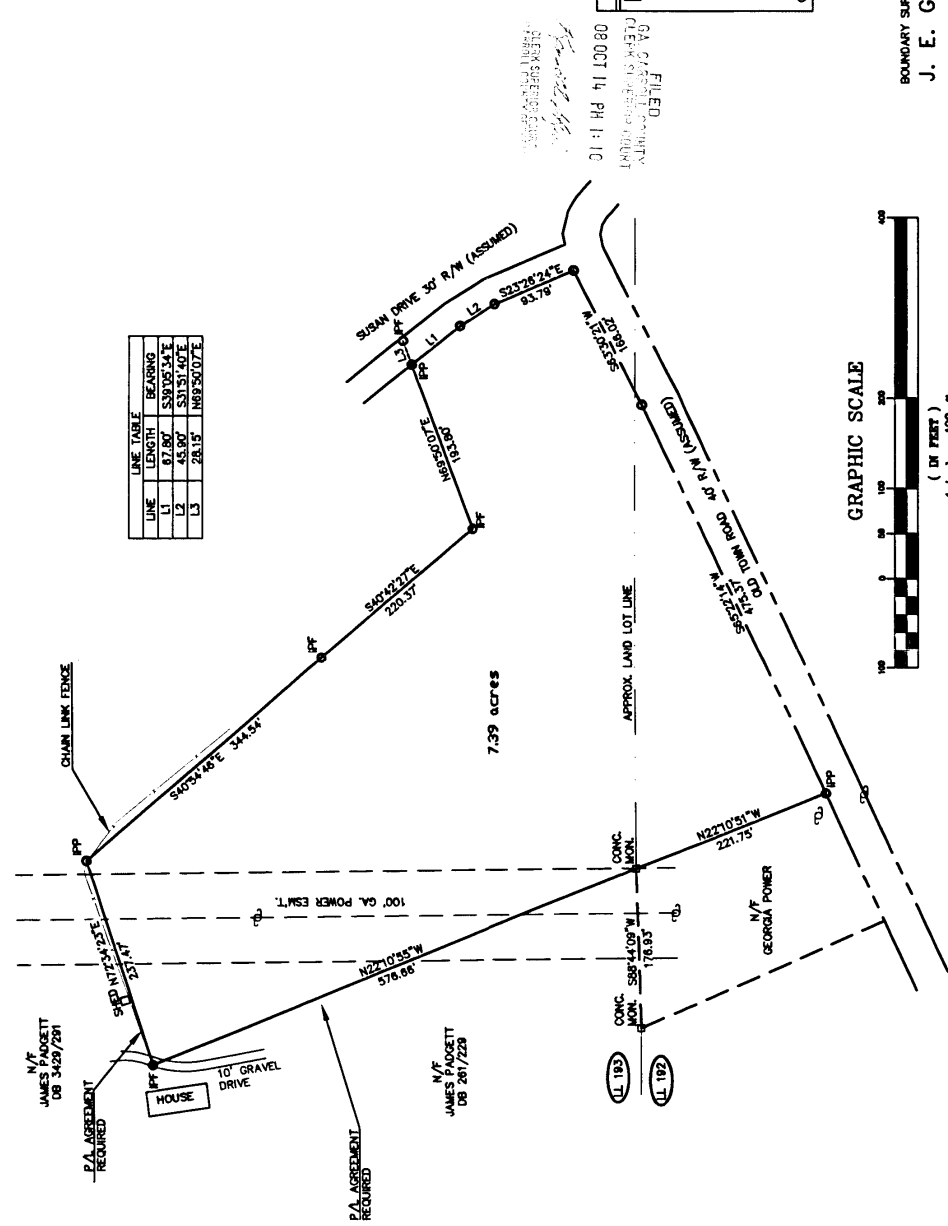




LINE	LENGTH	BEARING
L1	67.80'	S30°05'54"E
L2	45.80'	S31°51'40"E
L3	28.15'	N89°50'07"E



LEGEND

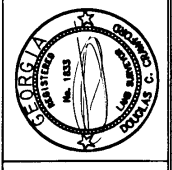
100	HOUSE NUMBER
101	LOT NUMBER
102	IRON PIN
103	SANITARY SEWER
104	POWER BOX
105	TELEPHONE BOX
106	CABLE TV BOX
107	WATER METER
108	POWER
109	ENCLOSURE
110	IRON PIN FOUND
111	IRON PIN PLACED
112	LANDLOT NUMBER



BOUNDARY SURVEY FOR
J. E. GEORGE ESTATE
 LOCATED IN LAND LOTS 182 & 183 DISTRICT 6
 CARROLL COUNTY, GEORGIA
 SCALE: 1" = 100' DATE: 10-23-07
 CHECKED BY: *BH* REV. 08-28-08
 JH 071003
 DWG# 3-07-153

9/4/87

Crawford & Associates
C. H. F., INC.
 ENGINEERING, LAND SURVEYING & LAND PLANNING
 105 CORPORATE DRIVE
 CARROLLTON, GA. 30117
 OFFICE (770) 834-4694
 FAX (770) 834-1005



IN ANY OPINION THIS IS A CORRECT REPRESENTATION OF THE LAND PLATTED AND THE SURVEYOR'S OBLIGATION IS LIMITED TO THE COMPATIBILITY WITH THE MINIMUM STANDARDS AND REQUIREMENTS OF LAW.
 GA. REG. L.E. WESLEY DOUGLAS C. DANFORD

6. THE ACCURACY OF THE PLAT HEREON IS GUARANTEED AS TO CORRECTNESS OF THE FIELD SURVEY AND THE PERFORMANCE OF THE FIELD SURVEY HEREON TO AN ACCURACY NOT TO EXCEED THE TYPICAL ACCURACY OF A SURVEY OF THIS CLASS AND TYPE OF SURVEY. THE SURVEYOR'S OBLIGATION IS LIMITED TO THE COMPATIBILITY WITH THE MINIMUM STANDARDS AND REQUIREMENTS OF LAW.

GENERAL NOTES
 4. NO TITLE OR INSTRUMENT RECORDING HAS BEEN PERFORMED BY THE UNDERSIGNED FOR THIS SURVEY.
 5. THE SURVEYOR'S OBLIGATION IS LIMITED TO THE COMPATIBILITY WITH THE MINIMUM STANDARDS AND REQUIREMENTS OF LAW.
 6. ONLY ACTS OF POSSESSION, IF ANY, THAT ARE VISIBLE FROM AERIAL INSPECTION OF THE SURVEYED AREA SHALL BE CONSIDERED IN THE PREPARATION OF THIS PLAT.
 7. THE SURVEYOR'S OBLIGATION IS LIMITED TO THE COMPATIBILITY WITH THE MINIMUM STANDARDS AND REQUIREMENTS OF LAW.

CLOSURE
 BE FIELD DATA UPON THE USE OF PLAT FOR THE PURPOSES OF THE SURVEY AND THE SURVEYOR'S OBLIGATION IS LIMITED TO THE COMPATIBILITY WITH THE MINIMUM STANDARDS AND REQUIREMENTS OF LAW.
 8. THE SURVEYOR'S OBLIGATION IS LIMITED TO THE COMPATIBILITY WITH THE MINIMUM STANDARDS AND REQUIREMENTS OF LAW.
 9. THE SURVEYOR'S OBLIGATION IS LIMITED TO THE COMPATIBILITY WITH THE MINIMUM STANDARDS AND REQUIREMENTS OF LAW.

10. THE SURVEYOR'S OBLIGATION IS LIMITED TO THE COMPATIBILITY WITH THE MINIMUM STANDARDS AND REQUIREMENTS OF LAW.
 11. THE SURVEYOR'S OBLIGATION IS LIMITED TO THE COMPATIBILITY WITH THE MINIMUM STANDARDS AND REQUIREMENTS OF LAW.
 12. THE SURVEYOR'S OBLIGATION IS LIMITED TO THE COMPATIBILITY WITH THE MINIMUM STANDARDS AND REQUIREMENTS OF LAW.