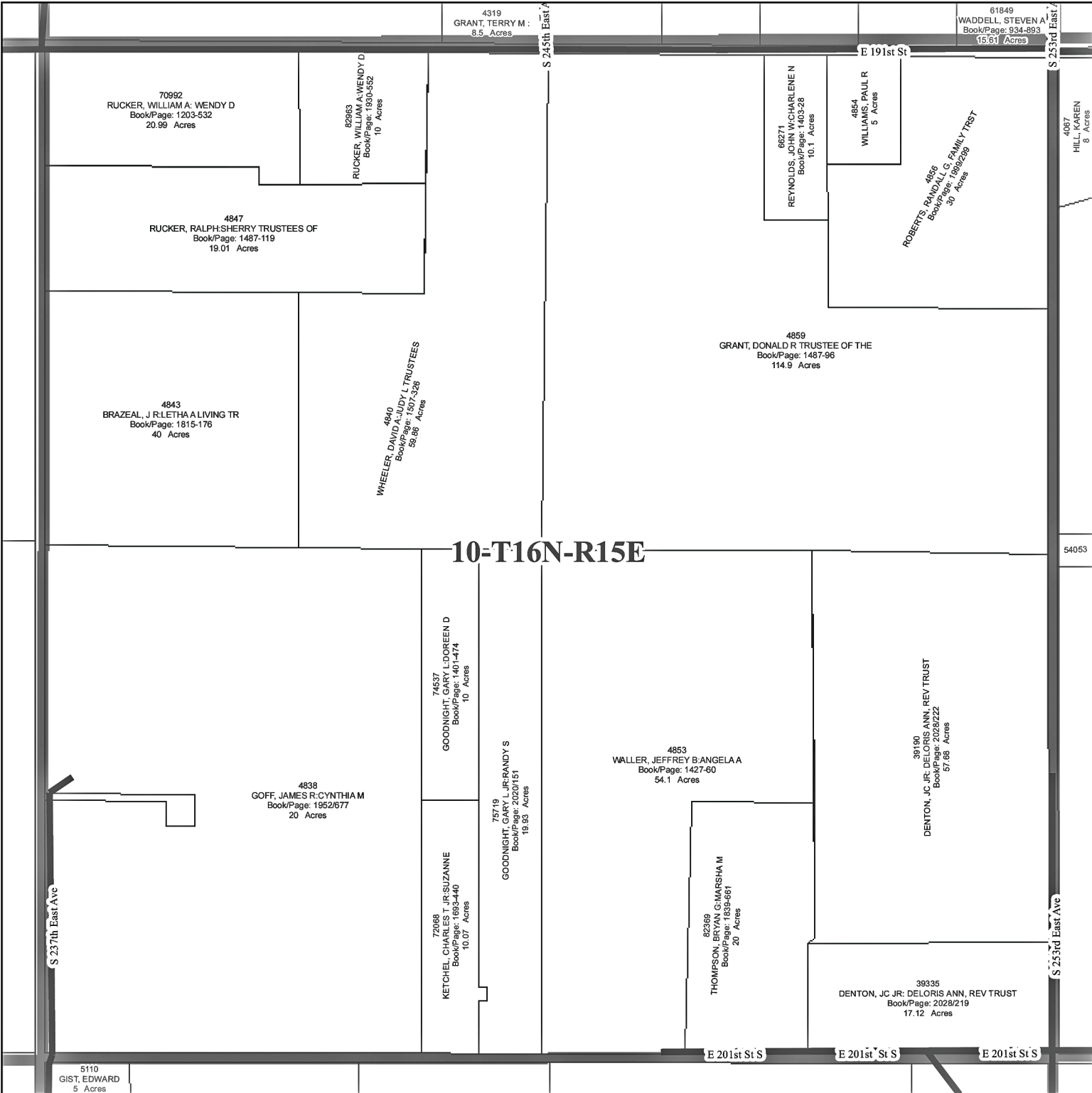


Section 10-T16N-R15E

Date created Feb 11, 2013 Scale = 1:8,400



WAGONER COUNTY MAPPING DEPARTMENT Sandy Hodges, Wagoner County Assessor

The contents of these maps are for the Wagoner County Reappraisal Program. Guidelines were established in accordance with Oklahoma Mapping Standards. Property descriptions are unofficial and Wagoner County assumes NO responsibility for any subsequent usage outside of the Reappraisal Program.

